

## USING VECTOR CALCULUS TO SOLVE PROBLEMS IN ELECTRICITY AND MAGNETISM

Summer 2020

Zoom Lecture: F: 2:00-4:00 p.m.

National Science Foundation (NSF) Center for Integrated Quantum Materials (CIQM), DMR -1231319

Dr. Steven L. Richardson (srichards22@comcast.net)

Professor Emeritus of Electrical Engineering, Department of Electrical and Computer Engineering, Howard University, Washington, DC  
and

Faculty Associate in Applied Physics, John A. Paulson School of Engineering and Applied Sciences, Harvard University, Cambridge, MA

### PROBLEM SET II (due Friday, July 3, 2020)

#### Problem 1

Evaluate the following integral by using trigonometric substitution. In this problem  $a$  is a constant and we ignore the constant of integration.

$$\int \frac{dx}{a^2 + x^2} = \frac{1}{a} \tan^{-1} \left( \frac{x}{a} \right)$$

#### Problem 2

Evaluate the following integral by using trigonometric substitution. In this problem  $a$  is a constant and we ignore the constant of integration.

$$\int \frac{dx}{(a^2 + x^2)^{\frac{3}{2}}} = \frac{x}{a^2 \sqrt{a^2 + x^2}}$$

#### Problem 3

This integral is quite involved to evaluate but it uses a very clever trick. In this problem  $a$  is a constant and we ignore all constants of integration. First show that the following is true using trigonometric substitution

$$\int \frac{dx}{(a^2 + x^2)^{\frac{1}{2}}} = \int \sec \theta \, d\theta$$

Next multiply both the numerator and denominator of this result by the term  $\sec \theta + \tan \theta$ . Expand this result out and then next by looking at the relationship between the denominator and numerator use integration by substitution to get the desired result. In this problem  $a$  is a constant and we ignore the constant of integration.

$$\int \frac{dx}{(a^2 + x^2)^{\frac{1}{2}}} = \ln \left[ \frac{x}{a} + \frac{(a^2 + x^2)^{\frac{1}{2}}}{a} \right]$$

#### Problem 4

Evaluate the following integral by first using the method of partial fractions and then using integration by substitution. In this problem both  $a$  and  $b$  are constants and we ignore the constant of integration.

$$\int \frac{dx}{x(ax + b)} = \frac{1}{b} \ln \left( \frac{x}{ax + b} \right)$$

#### Problem 5

Evaluate the following integral by first using the method of partial fractions and then using integration by substitution. In this problem  $a$  is a constant.

$$\int \frac{dx}{x^2 - a^2} = \frac{1}{2a} \ln \left( \frac{x - a}{x + a} \right)$$

#### Problem 6

Evaluate the following integral with no hints

$$\int \frac{dx}{(a^2 - x^2)^{\frac{1}{2}}}$$

#### Problem 7

Evaluate the following integral with no hints

$$\int \frac{x dx}{(ax + b)^2}$$

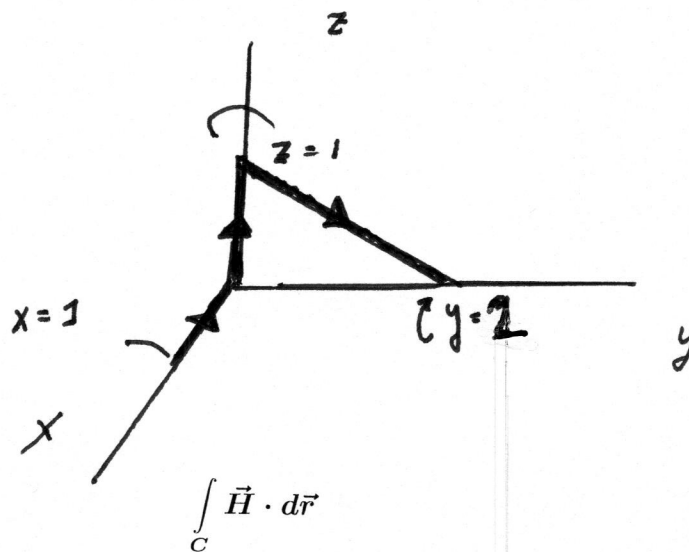
## Problem 8

Evaluate the following integral with no hints

$$\int \frac{x^2 dx}{(ax + b)^2}$$

## Problem 9

Evaluate the following line integral of  $\vec{H}$  around the closed path C in the figure below



where

$$\vec{H} = (x - y)\hat{i} + (x^2 + zy)\hat{j} + 5yz\hat{k}$$

## Problem 10

We will discuss later in this course that the line integral below is regarded as the work done in moving a particle from a point  $\vec{A}$  to a point  $\vec{B}$  in space

$$\int_A^B \vec{F} \cdot d\vec{r}$$

For the following choice of  $\vec{F}$

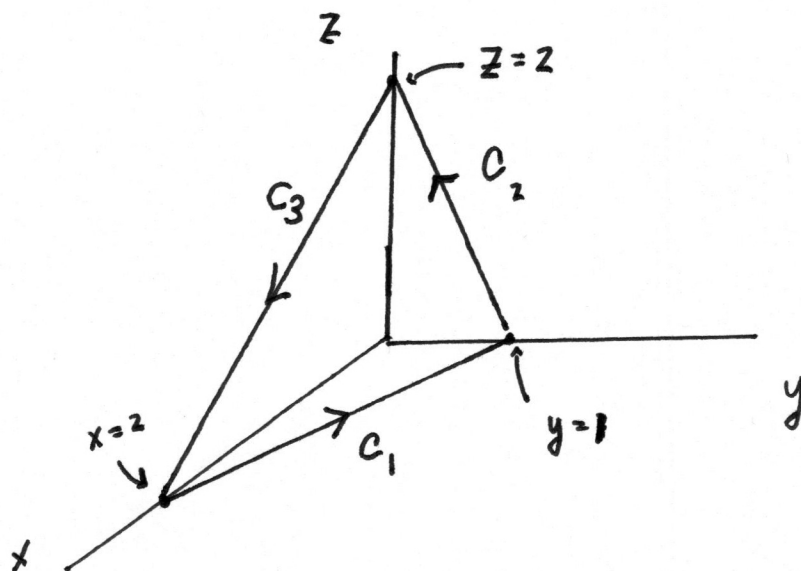
$$\vec{F} = (2xy - 3)\hat{i} + x^2\hat{j}$$

find the work done by  $\vec{F}$  along each of the paths indicated below from the point (1, 0) to (0,1):

- (i) Path 1: along the straight line from (1, 0) to (0, 1)
- (i) Path 2: along the circular arc from (1, 0) to (0, 1)
- (iii) Path 3: first along the straight line from (1, 0) to (1, 1) and then along the straight line from (1,1) to (0,1)

## Problem 11

Evaluate the following line integral of  $\vec{M}$  around the closed path  $C$  in the figure below where  $C$  is the part of the plane  $x + 2y + z = 2$  in the first octant



$$\oint_C \vec{M} \cdot d\vec{r}$$

and

$$\vec{M} = (y - x)\hat{i} + (x - z)\hat{j} + (x - y)\hat{k}$$

## Problem 12

Evaluate the following line integral below

$$\int_C \frac{-y \hat{i} + x \hat{j}}{\sqrt{x^2 + y^2}} \cdot d\vec{r}$$

where  $C$  is a circle of radius  $a$  in the  $xy$ -plane, with the center at the origin, traced out counterclockwise.

Problem 1

Integrate  $\int \frac{dx}{x^2+a^2}$

---

Let  $[x^2+a^2] = a^2 [1 + (\frac{x}{a})^2]$

Let  $\tan \theta = \frac{x}{a}$  or  $x = a \tan \theta$

$dx = a \sec^2 \theta d\theta$  [Since  $a$  is a constant]

$$\int \frac{dx}{x^2+a^2} = \int \frac{a \sec^2 \theta d\theta}{a^2 [1 + \tan^2 \theta]}$$

$$= \frac{1}{a} \int \frac{\sec^2 \theta}{\sec^2 \theta} d\theta = \frac{1}{a} \int d\theta = \frac{\theta}{a}$$

Finally since  $\tan \theta = \frac{x}{a}$

$$\theta = \tan^{-1} \left( \frac{x}{a} \right)$$

and

$$\boxed{\int \frac{dx}{x^2+a^2} = \frac{1}{a} \tan^{-1} \left( \frac{x}{a} \right)}$$

# Problem 2

Integrate

$$\int \frac{dx}{[a^2 + x^2]^{3/2}}$$

$$a^2 \left[ 1 + \left( \frac{x}{a} \right)^2 \right]^{3/2}$$

Let  $\tan \theta = \frac{x}{a}$

$x = a \tan \theta$ , where  $a$  is a constant

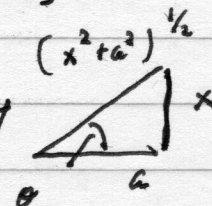
$$dx = a \sec^2 \theta d\theta$$

$$\begin{aligned} \left[ 1 + \left( \frac{x}{a} \right)^2 \right]^{3/2} &= \left[ 1 + \tan^2 \theta \right]^{3/2} = \left[ \sec^2 \theta \right]^{3/2} \\ &= \sec^3 \theta \end{aligned}$$

$$\int \frac{dx}{[a^2 + x^2]^{3/2}} = \int \frac{a \sec^2 \theta d\theta}{a^3 \sec^3 \theta} = \frac{1}{a^2} \int \cos \theta d\theta$$

$$\int \frac{dx}{[a^2 + x^2]^{3/2}} = \frac{1}{a^2} \sin \theta$$

Using this right triangle to relate  $\theta$  to  $a, x$



$$\boxed{\int \frac{dx}{[a^2 + x^2]^{3/2}} = \frac{1}{a^2} \frac{x}{[x^2 + a^2]^{1/2}}}$$

where  $a$  is a constant



Problem 3

Integrate  $\int \frac{dx}{[a^2 + x^2]^{\frac{1}{2}}}$

---

Let

$$\int \frac{dx}{[a^2 + x^2]^{\frac{1}{2}}} = \int \frac{dx}{a \left[ 1 + \left(\frac{x}{a}\right)^2 \right]^{\frac{1}{2}}}$$

and let  $\tan \theta = \frac{x}{a}$

$$dx = a \sec^2 \theta d\theta$$
$$\left[ 1 + \left(\frac{x}{a}\right)^2 \right]^{\frac{1}{2}} = \left[ 1 + \tan^2 \theta \right]^{\frac{1}{2}} = \sec \theta$$

$$\int \frac{dx}{[a^2 + x^2]^{\frac{1}{2}}} = \int \frac{a \sec^2 \theta d\theta}{a \sec \theta} = \int \sec \theta d\theta$$

$$\int \frac{\sec \theta [\tan \theta + \sec \theta] d\theta}{\sec \theta + \tan \theta} = \int \frac{[\sec^2 \theta + \tan \theta \sec \theta] d\theta}{\sec \theta + \tan \theta}$$

Let  $u = \tan \theta + \sec \theta$

$$du = \sec^2 \theta d\theta + \frac{0 - (-\sin \theta) d\theta}{\cos^2 \theta}$$

$$du = [\sec^2 \theta + \tan \theta \sec \theta] d\theta$$

Thus

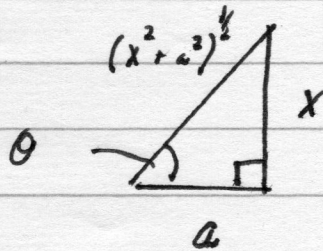
$$\int \frac{dx}{[a^2+x^2]^{\frac{1}{2}}} = \int \frac{du}{u} = \ln u = \ln [\tan \theta + \sec \theta]$$

where  $u = \tan \theta + \sec \theta$

$$du = [\sec^2 \theta + \tan \theta \sec \theta] d\theta$$

Now let us recall

$$\tan \theta = \frac{x}{a}$$



so from the diagram

$$\cos \theta = \frac{a}{[x^2+a^2]^{\frac{1}{2}}}$$

$$\text{or } \sec \theta = \frac{[x^2+a^2]^{\frac{1}{2}}}{a}$$

$$\begin{aligned} \int \frac{dx}{[a^2+x^2]^{\frac{1}{2}}} &= \ln \left[ \left( \frac{x}{a} \right) + \left( \frac{[x^2+a^2]^{\frac{1}{2}}}{a} \right) \right] \\ &= \ln \left[ \frac{x}{a} + \frac{(x^2+a^2)^{\frac{1}{2}}}{a} \right] \end{aligned}$$

Problem 4

Evaluate the integral

$$\int \frac{dx}{x(ax+b)}$$

Use the method of partial fractions

$$\frac{1}{x(ax+b)} = \frac{C_1}{x} + \frac{C_2}{(ax+b)} = \frac{1}{x(ax+b)}$$

$$(ax+b)C_1 + C_2x = 1$$

$$(C_1a + C_2)x + C_1b = 1$$

$$C_1a + C_2 = 0$$

$$C_1b = 1$$

$$C_1a + C_2 = 0$$

$$C_1b = 1$$

$$\begin{cases} C_1ab + C_2b = 0 & \textcircled{1} \\ C_1ab = a & \textcircled{2} \end{cases}$$

Subtract  $\textcircled{1} - \textcircled{2}$

$$C_2b = -a$$

$$C_2 = -\frac{a}{b}$$

$$C_1 = \frac{1}{b}$$

$$\int \frac{dx}{x(ax+b)} = \int \frac{dx}{bx} - \frac{a}{b} \int \frac{dx}{(ax+b)}$$
$$= \frac{1}{b} \int \frac{dx}{x} - \frac{a}{b} \int \frac{dx}{(ax+b)}$$

Now let us do these integrals by substitution

$$\frac{1}{b} \int \frac{dx}{x} \quad \text{Let } u=x, \quad du=dx$$

$$\frac{1}{b} \int \frac{du}{u} = \frac{1}{b} \ln u = \frac{1}{b} \ln x$$

$$-\frac{a}{b} \int \frac{dx}{(ax+b)} \quad \text{Let } u=ax+b, \quad du=a dx$$

$$-\frac{a}{b} \int \frac{dx}{(ax+b)} = -\frac{a}{b} \frac{1}{a} \int \frac{du}{u} = -\frac{1}{b} \ln u$$

$$= -\frac{1}{b} \ln(ax+b)$$

$$\int \frac{dx}{x[ax+b]} = \frac{1}{b} \ln x - \frac{1}{b} \ln(ax+b)$$

$$\int \frac{dx}{x[ax+b]} = \frac{1}{b} \ln \left( \frac{x}{ax+b} \right)$$

Problem 5

Integrate

$$\int \frac{dx}{x^2 - a^2} \quad \text{where } a \text{ is a constant}$$

Use method of partial fractions

$$\frac{1}{x^2 - a^2} = \frac{1}{(x+a)(x-a)} = \frac{C_1}{(x+a)} + \frac{C_2}{(x-a)} = \frac{1}{(x+a)(x-a)}$$

$$\text{Since } (x-a)C_1 + C_2(x+a) = 1$$

$$xC_1 - aC_1 + C_2x + C_2a = 1$$

$$x(C_1 + C_2) + a(C_2 - C_1) = 1$$

or

$$C_1 + C_2 = 0$$

$$aC_2 - aC_1 = 1$$

which can be solved to yield

$$\begin{aligned} aC_1 + aC_2 &= 0 \\ aC_2 - aC_1 &= 1 \end{aligned} \Rightarrow 2aC_2 = 1$$

$$\text{or } C_2 = \frac{1}{2a}$$

$$\therefore C_1 = -\frac{1}{2a}$$

$$\int \frac{dx}{x^2 - a^2} = \frac{1}{2a} \left[ \int \frac{dx}{(x+a)} + \int \frac{dx}{(x-a)} \right]$$

Let  $u = x+a$   $du = dx$  and  $v = x-a$   $dv = dx$   
(1st integral)

and integrate the result to give

$$\int \frac{dx}{x^2 - a^2} = \frac{1}{2a} \left[ -\ln(x+a) \right] + \frac{1}{2a} \left[ \ln(x-a) \right]$$

or

$$\int \frac{dx}{x^2 - a^2} = \frac{1}{2a} \ln \left( \frac{x-a}{x+a} \right)$$

Problem 6

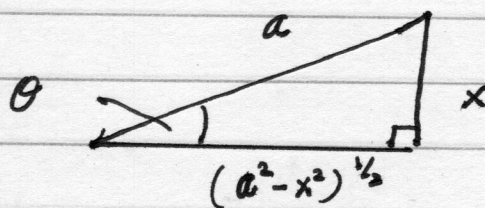
Integrate

$$\int \frac{dx}{\sqrt{a^2 - x^2}}$$

Clearly we want to take the positive square root  
so

$$\begin{aligned} a &> x \\ a^2 &> x^2 \\ a^2 - x^2 &> x^2 - x^2 = 0 \\ (a^2 - x^2)^{1/2} &> 0 \end{aligned}$$

We can use trigonometric substitution and  
define the angle  $\theta$  such that



and

$$\sin \theta = \frac{x}{a}$$

$$\sqrt{a^2 - x^2} \rightarrow a \left(1 - \left(\frac{x}{a}\right)^2\right)^{1/2} = a \left[1 - \sin^2 \theta\right]^{1/2}$$

$$\sqrt{a^2 - x^2} = a \cos \theta$$

$$dx = -a \sin \theta d\theta$$

$$\int \frac{dx}{\sqrt{a^2 - x^2}} = \int \frac{-a \sin \theta d\theta}{a \cos \theta} = \int -d\theta = -\theta = -\sin^{-1}\left(\frac{x}{a}\right)$$



Problem 7-

Evaluate the integral

$$\int \frac{x dx}{[ax+b]^2}$$

Let  $u = ax + b$

Therefore  $ax = u - b$

$$x = \frac{u}{a} - \frac{b}{a}$$

$$dx = \frac{1}{a} du$$

$$[ax+b]^2 = u^2$$

$$\int \frac{x dx}{[ax+b]^2} = \frac{1}{a} \int \left[ \frac{u}{a} - \frac{b}{a} \right] \frac{du}{u^2}$$

$$\int \frac{x dx}{[ax+b]^2} = \frac{1}{a^2} \int \frac{du}{u} - \frac{b}{a^2} u^{-2} du$$

$$\int \frac{x dx}{[ax+b]^2} = \frac{1}{a^2} \ln u - \frac{b}{a^2} \frac{u^{-1}}{(-1)}$$

$$\int \frac{x dx}{[ax+b]^2} = \frac{1}{a^2} \ln [ax+b] + \frac{b}{a^2} \frac{1}{[ax+b]}$$

## Problem 8

Evaluate the following integral.

$$\int \frac{x^2 dx}{[ax+b]^2}$$

Let  $u = ax + b$

$$ax = u - b$$

$$x = \frac{u - b}{a}$$

$$[ax + b]^2 = u^2$$

$$dx = \frac{1}{a} du$$

$$\int \frac{x^2 dx}{[ax+b]^2} = \frac{1}{a^2} \int \frac{[u-b]^2 du}{u^2}$$

$$\int \frac{x^2 dx}{[ax+b]^2} = \frac{1}{a^2} \int \left[ \frac{u^2 - 2ub + b^2}{u^2} \right] du$$

$$\int \frac{x^2 dx}{[ax+b]^2} = \frac{1}{a^2} \left[ \int du - 2b \int \frac{du}{u} + \int b^2 u^{-2} du \right]$$

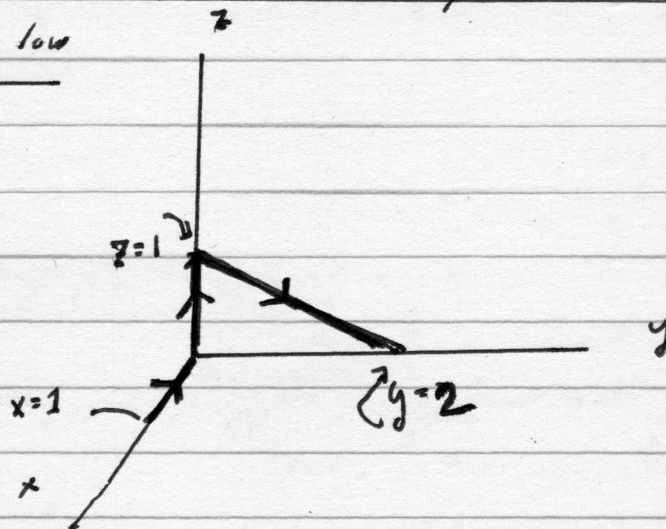
$$\int \frac{x^2 dx}{[ax+b]^2} = \frac{u}{a^2} - \frac{2b}{a^2} \ln u + \frac{b^2}{a^2} \frac{u^{-1}}{(-1)}$$

$$\int \frac{x^2 dx}{[ax+b]^2} = \frac{ax+b}{a^3} - \frac{2b}{a^3} \ln[ax+b] - \frac{b^2}{a^3} \frac{1}{[ax+b]}$$

$$\int \frac{x^2 dx}{[ax+b]^2} = \frac{ax+b}{a^3} - \frac{2b}{a^3} \ln[ax+b] - \frac{b^2}{a^3} \frac{1}{[ax+b]}$$

Problem 9

Evaluate the following line integral of  $\vec{H}$  around the closed path  $C$  in the figure below



$$\int_C \vec{H} \cdot d\vec{r}$$

where

$$\vec{H} = (x-y)\hat{i} + (x^2 + zy)\hat{j} + 5yz\hat{k}$$

$$d\vec{r} = \hat{i} dx + \hat{j} dy + \hat{k} dz$$

$$\vec{H} \cdot d\vec{r} = (x-y) dx + (x^2 + zy) dy + 5yz dz$$

$$\int_C \vec{H} \cdot d\vec{r} = \int_C (x-y) dx + (x^2 + zy) dy + 5yz dz$$

There are three paths in  $C$

Path ① :  $x$  is a variable

$$z=0 \quad dz=0$$

$$y=0 \quad dy=0$$

$$\int_{C_1} (0+x) dx + 0 + 0 = \int_1^0 x dx = \left. \frac{x^2}{2} \right|_1^0 = -\frac{1}{2}$$

Path ② :  $z$  is a variable

$$x=0=y=0$$

$$dx=dy=0$$

$$\int_{C_2} 0 + 0 + 0 = 0$$

Path ③ : A line in  $yz$ -plane

$$z = -\frac{1}{2}y + 1 = 1 - \frac{y}{2}$$

N.B. When  $y=0$ ,  $z=1$

When  $y=2$ ,  $z=0$

$$x=0 = dx = 0$$

416-

$$\int_C \vec{H} \cdot d\vec{r} = \int_{C_1}^{\frac{-1}{2}} \vec{H} \cdot d\vec{r} + \int_{C_2}^0 \vec{H} \cdot d\vec{r} + \int_{C_3} \vec{H} \cdot d\vec{r}$$

$$\int_{C_3} \vec{H} \cdot d\vec{r} = \int_{C_3} [(x-y)dx + (x^2 + zy)dy + 5yzdz]$$

$$\int_{C_3} \vec{H} \cdot d\vec{r} = \int [(0) + (0 + zy)dy + 5yzdz]$$

$$= \int zy dy + \int 5yz dz$$

Let us choose to express every thing in terms of y

$$z = \frac{1-y}{2}$$

$$dz = -\frac{1}{2} dy$$

$$\int_{C_3} \vec{H} \cdot d\vec{r} = \int_{y=0}^{y=2} \left[1 - \frac{y}{2}\right] y dy + 5 \int_{y=0}^{y=2} y \left[1 - \frac{y}{2}\right] dy \left(-\frac{1}{2}\right)$$

$$\int_{C_3} \vec{H} \cdot d\vec{r} = \int_0^2 \left[ y - \frac{y^2}{2} \right] dy - \frac{5}{2} \int_0^2 \left[ y - \frac{y^2}{2} \right] dy$$

$$\int_{C_3} \vec{H} \cdot d\vec{r} = \left[ \frac{y^2}{2} - \frac{y^3}{6} \right]_0^2 - \frac{5}{2} \left[ \frac{y^2}{2} - \frac{y^3}{6} \right]_0^2$$

$$\int_{C_3} \vec{H} \cdot d\vec{r} = \frac{4}{2} - \frac{8}{6} - \frac{5}{2} \left[ \frac{4}{2} - \frac{8}{6} \right]$$

$$\int_{C_3} \vec{H} \cdot d\vec{r} = \frac{4}{2} - \frac{8}{6} - \frac{20}{4} + \frac{40}{12}$$

$$\int_{C_3} \vec{H} \cdot d\vec{r} = \frac{4}{2} - \frac{10}{2} - \frac{8}{6} + \frac{20}{6}$$

$$\int_{C_3} \vec{H} \cdot d\vec{r} = -\frac{6}{2} + \frac{12}{6} = -3 + 2 = -1$$

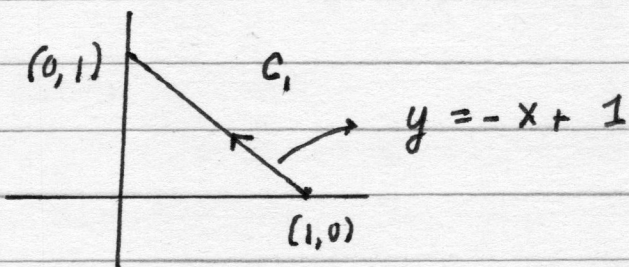
In summary,

$$\boxed{\int_C \vec{H} \cdot d\vec{r} = -\frac{1}{2} + 0 - 1 = -\frac{3}{2}}$$

Problem 10

$$\underline{\vec{F} = (2xy - 3)\hat{i} + x^2\hat{j}}$$

(i) Path 1



$$W = \int_{C_1} \vec{F} \cdot d\vec{r} = \int (F_x\hat{i} + F_y\hat{j}) \cdot (dx\hat{i} + dy\hat{j})$$

$$W = \int_{C_1} F_x dx + F_y dy$$

$$W = \int_{C_1} (2xy - 3) dx + x^2 dy$$

Along  $C_1$ ,  $y = -x + 1$   
 $dy = -dx$

$$W = \int_1^0 [2x(1-x) - 3] dx - \int_1^0 x^2 dx$$

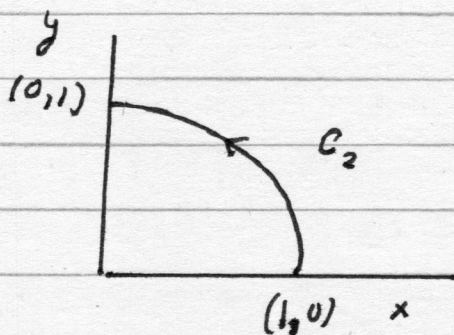
$$W = \int_1^0 [2x - 2x^2 - 3] dx - \int_1^0 x^2 dx$$



$$W = \left[ \frac{2x^2}{2} - \frac{2}{3}x^3 - 3x \right]_1^0 - \frac{x^3}{3} \Big|_1^0$$

$$W = -1 + \frac{2}{3} + 3 + \frac{1}{3} = 1 + 3 - 1 = 3$$

(ii) Path 2



$$C_2 \Rightarrow x^2 + y^2 = 1$$

$$W = \int_{C_2} [2xy - 3] dx + \int_{C_2} x^2 dy$$

Change to plane polar coordinates

$$\left. \begin{aligned} x &= r \cos \theta = \cos \theta \\ y &= r \sin \theta = \sin \theta \end{aligned} \right\} \text{ since } r = 1$$

$$dx = -\sin \theta d\theta$$

$$dy = \cos \theta d\theta$$

$$W = \int_{C_2} [2 \cos \theta \sin \theta - 3] (-\sin \theta d\theta) \\ + \int_{C_2} \cos^2 \theta [\cos \theta d\theta]$$

$$W = \int_0^{\pi/2} [-2 \cos \theta \sin^2 \theta d\theta + 3 \sin \theta d\theta] \\ + \int_0^{\pi/2} \cos^3 \theta d\theta$$

$$W = \int_0^{\pi/2} [-\cos \theta (+2 \sin^2 \theta - \cos^2 \theta) + 3 \sin \theta] d\theta$$

$$W = \int_0^{\pi/2} [-\cos \theta [2 \sin^2 \theta - [1 - \sin^2 \theta] + 3 \sin \theta]] d\theta$$

$$W = \int_0^{\pi/2} [-\cos \theta [3 \sin^2 \theta - 1 + 3 \sin \theta]] d\theta$$

$$W = -3 \int_0^{\pi/2} \sin^2 \theta \cos \theta d\theta \quad + \int_0^{\pi/2} \cos \theta d\theta \quad + 3 \int_0^{\pi/2} \sin \theta d\theta$$

(I)
(II)
(III)

The last two integrals are easy

$$\textcircled{\text{II}} \int_0^{\pi/2} \cos \theta d\theta = \sin \theta \Big|_0^{\pi/2} = 1$$

$$\textcircled{\text{III}} 3 \int_0^{\pi/2} \sin \theta d\theta = -3 \cos \theta \Big|_0^{\pi/2} + 3$$

while the first integral can be done by substitution

$$\textcircled{\text{I}} -3 \int_0^{\pi/2} \sin^2 \theta \cos \theta d\theta$$

$$u = \sin \theta$$

$$du = \cos \theta d\theta$$

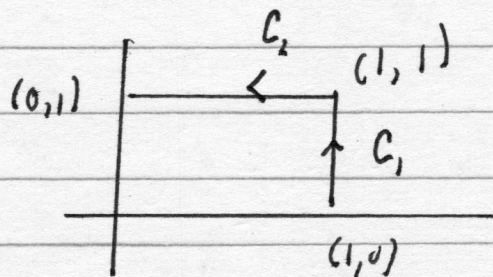
$$u^2 = \sin^2 \theta$$

$$\begin{aligned} \textcircled{\text{I}} -3 \int u^2 du &= \frac{-3u^3}{3} = -[\sin^3 \theta]_0^{\pi/2} \\ &= -[1 - 0] = -1 \end{aligned}$$

So the final result  $\textcircled{\text{I}} + \textcircled{\text{II}} + \textcircled{\text{III}}$  is

$$W = \int_{C_2} [2xy - 3] dx + \int_{C_2} x^2 dy = -1 + 1 + 3 = \textcircled{3}$$

(iii) Path 3



$$\int_{C_1} \vec{F} \cdot d\vec{r} = \int_{C_1} (2xy - 3) dx + x^2 dy$$

Along  $C_1$   $x = 1$   
 $dx = 0$   
 $y$  is a variable

$$\int_{C_1} \vec{F} \cdot d\vec{r} = \int_0^1 dy = 1$$

$$\int_{C_2} \vec{F} \cdot d\vec{r} = \int_{C_2} (2xy - 3) dx + x^2 dy$$

Along  $C_2$   $y = 1$   
 $dy = 0$   
 $x$  is a variable

$$\int_{C_2} \vec{F} \cdot d\vec{r} = \int_1^0 [2x - 3] dx = [x^2 - 3x]_1^0 = -1 + 3 = 2$$

Along Path (iii)  $C_1 + C_2 \Rightarrow$  result is  $2 + 1 = 3$

Note that

$$\int_{\text{Path 1}} \vec{F} \cdot d\vec{r} = \int_{\text{Path 2}} \vec{F} \cdot d\vec{r} = \int_{\text{Path 3}} \vec{F} \cdot d\vec{r}$$

So that this vector  $\vec{F}$  is very special  
as its result is path independent  
from  $(1,0)$  to  $(0,1)$

Problem 11

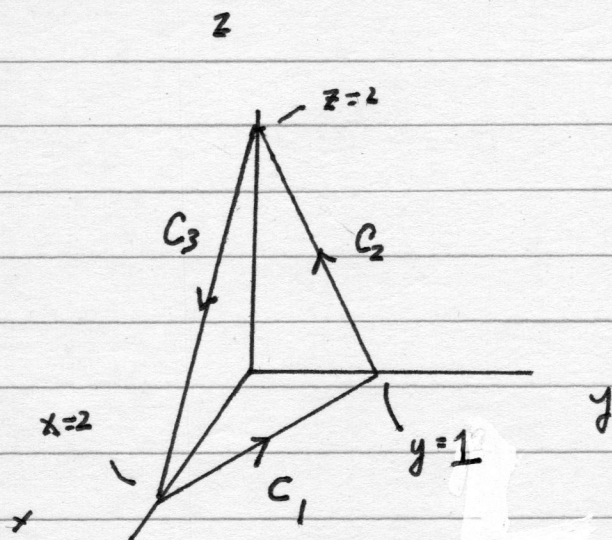
Suppose you are given the vector  $\vec{M}$  which is defined as

$$\vec{M} = (y-x)\hat{i} + (x-z)\hat{j} + (x-y)\hat{k}$$

(i) Evaluate the line integral

$$\oint_C \vec{M} \cdot d\vec{r}$$

where  $C$  is the closed path defined in the figure below and  $C = C_1 + C_2 + C_3$



and this plane above in the figure is defined by the surface.

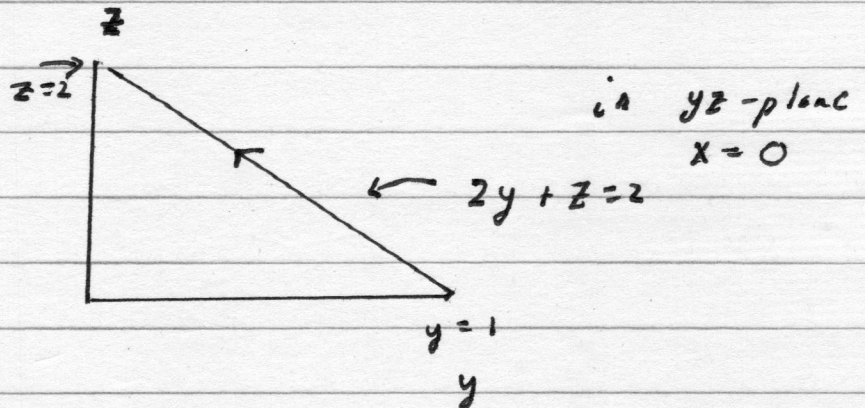
$$x + 2y + z = 2$$

$$\int_{C_1} \vec{M} \cdot d\vec{r} = \int_{y=0}^{y=1} (y - 2 + 2y) (-2 dy) + \int_{y=0}^{y=1} (2 - 2y) dy$$

$$\int_{C_1} \vec{M} \cdot d\vec{r} = \left[ -2 \frac{y^2}{2} + 4y - \frac{4y^2}{2} \right]_0^1 + 2y \Big|_0^1 - \frac{2y^2}{2} \Big|_0^1$$

$$\int_{C_1} \vec{M} \cdot d\vec{r} = -1 + 4 - 2 + 2 - 1 = 2$$

What about  $C_2$ ?



$$2y + z = 2 \rightarrow \boxed{y = -\frac{1}{2}z + 1}$$

or

$$z = 2 - 2y$$

$$x = 0, dx = 0$$

$$dz = -2dy \quad \text{or} \quad dy = -\frac{1}{2}dz$$

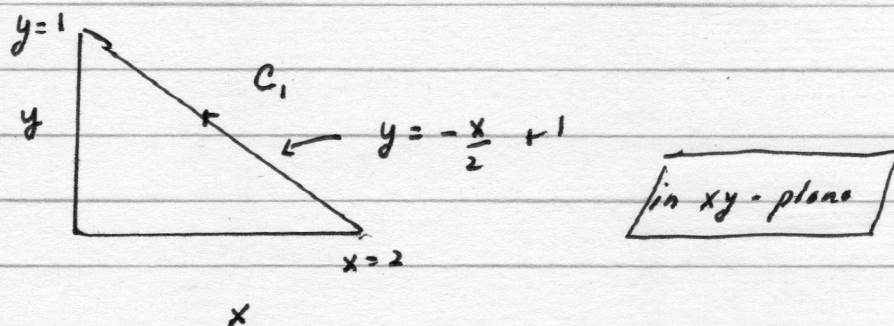
Let us first review  $C_1$ , where  $z = 0$

Thus  $x + 2y + z = 2$  becomes  $z = 0$

$$x + 2y = 2$$

$$2y = 2 - x$$

$$y = -\frac{x}{2} + 1$$



$$\vec{H} = (y-x)\hat{i} + (x-z)\hat{j} + (x-y)\hat{k}$$

$$d\vec{r} = \hat{i} dx + \hat{j} dy + \hat{k} dz$$

$$\vec{H} \cdot d\vec{r} = (y-x) dx + (x-z) dy + (x-y) dz$$

$$\int_{C_1} (\vec{H} \cdot d\vec{r}) = \int_{C_1} \vec{H} \cdot d\vec{r} = \int (y-x) dx + \int (x-z) dy + \int (x-y) dz$$

To evaluate this over  $y$  we  
realize

$$x = 2 - 2y$$

$$dx = -2 dy$$

and note

$$z = 0$$

$$dz = 0$$



$$\int_{C_2} \vec{H} \cdot d\vec{l} = \int (y-x) dx + \int (x-z) dy + \int (x-y) dz$$

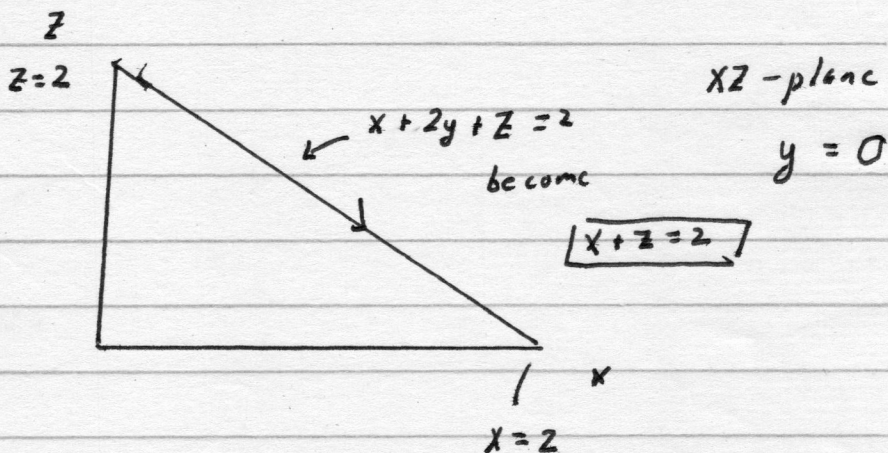
$$= \int_0^2 -z dy + \int_0^2 (x-y) dz$$

$$= \int_0^2 -z \left(-\frac{1}{2} dz\right) + \int_0^2 -\left[1 - \frac{z}{2}\right] dz$$

$$+ \frac{1}{2} \frac{z^2}{2} \Big|_0^2 + (-z) \Big|_0^2 + \frac{z^2}{4} \Big|_0^2$$

$$\frac{4}{4} - 2 + \frac{4}{4} = 0$$

Finally, the case for  $C_3$ !



$$y=0; dy=0; \quad x=2-z; \quad dx = -dz$$

$$dz = -dx$$

$$\int_{C_3} \vec{H} \cdot d\vec{L} = \int (y-x) dx + \int (x-z) dy + \int (x-y) dz$$

↓ becomes

$$\int_{C_3} \vec{H} \cdot d\vec{L} = \int_0^2 -x dx + \int_0^2 x (-dx)$$

$$= -\frac{x^2}{2} \Big|_0^2 - \frac{x^2}{2} \Big|_0^2$$

$$= 2 - 2 = -4$$

In summary

$$\oint_C \vec{H} \cdot d\vec{r} = \int_{C_1} \vec{H} \cdot d\vec{r} + \int_{C_2} \vec{H} \cdot d\vec{r} + \int_{C_3} \vec{H} \cdot d\vec{r}$$

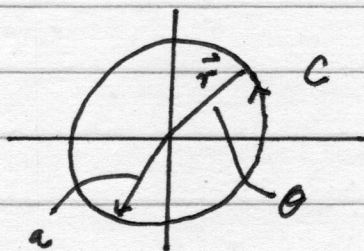
$$\oint_C \vec{H} \cdot d\vec{r} = -2$$

Problem 12

Evaluate the following line integral below

$$\int_C \frac{(-y\hat{i} + x\hat{j})}{[x^2 + y^2]^{3/2}} \cdot d\vec{r}$$

where  $C$  is a circle of radius  $a$  in the  $xy$ -plane, with the center at the origin, traced out counterclockwise.



$$\vec{r} = \hat{i}x + \hat{j}y + \hat{k}z = \hat{i}x + \hat{j}y \quad (\text{since } z=0$$

$$d\vec{r} = \hat{i}dx + \hat{j}dy + \hat{k}dz$$

as we  
are in  
xy-plane)

$$x = r \cos \theta$$

$$dx = -r \sin \theta d\theta$$

$$y = r \sin \theta$$

$$dy = r \cos \theta d\theta, \text{ where } r$$

is a  
constant

$$x^2 + y^2 = r^2 [\cos^2 \theta + \sin^2 \theta] = r^2$$

$$(-y\hat{i} + x\hat{j}) \cdot d\vec{r} = (-y\hat{i} + x\hat{j}) \cdot (\hat{i}dx + \hat{j}dy) = -ydx + xdy$$

$$\int_C \frac{[-y \hat{i} + x \hat{j}] \cdot d\vec{r}}{[x^2 + y^2]^{1/2}} = \int_C \frac{-y dx + x dy}{[x^2 + y^2]^{1/2}}$$

Let us do a change in variables to  
plane polar coordinates

$$\int_C \frac{-y dx + x dy}{[x^2 + y^2]^{1/2}} = \int \frac{-r \sin \theta (-r \sin \theta) d\theta + r \cos \theta (r \cos \theta) d\theta}{r}$$

$$= \int \frac{r^2 \sin^2 \theta + r^2 \cos^2 \theta d\theta}{r}$$

$$= \int \frac{r^2 [\sin^2 \theta + \cos^2 \theta] d\theta}{r} = r \int d\theta = \boxed{2\pi r}$$

This should not be a surprise! Think  
about what you are doing before you get  
lost in details of the calculation